

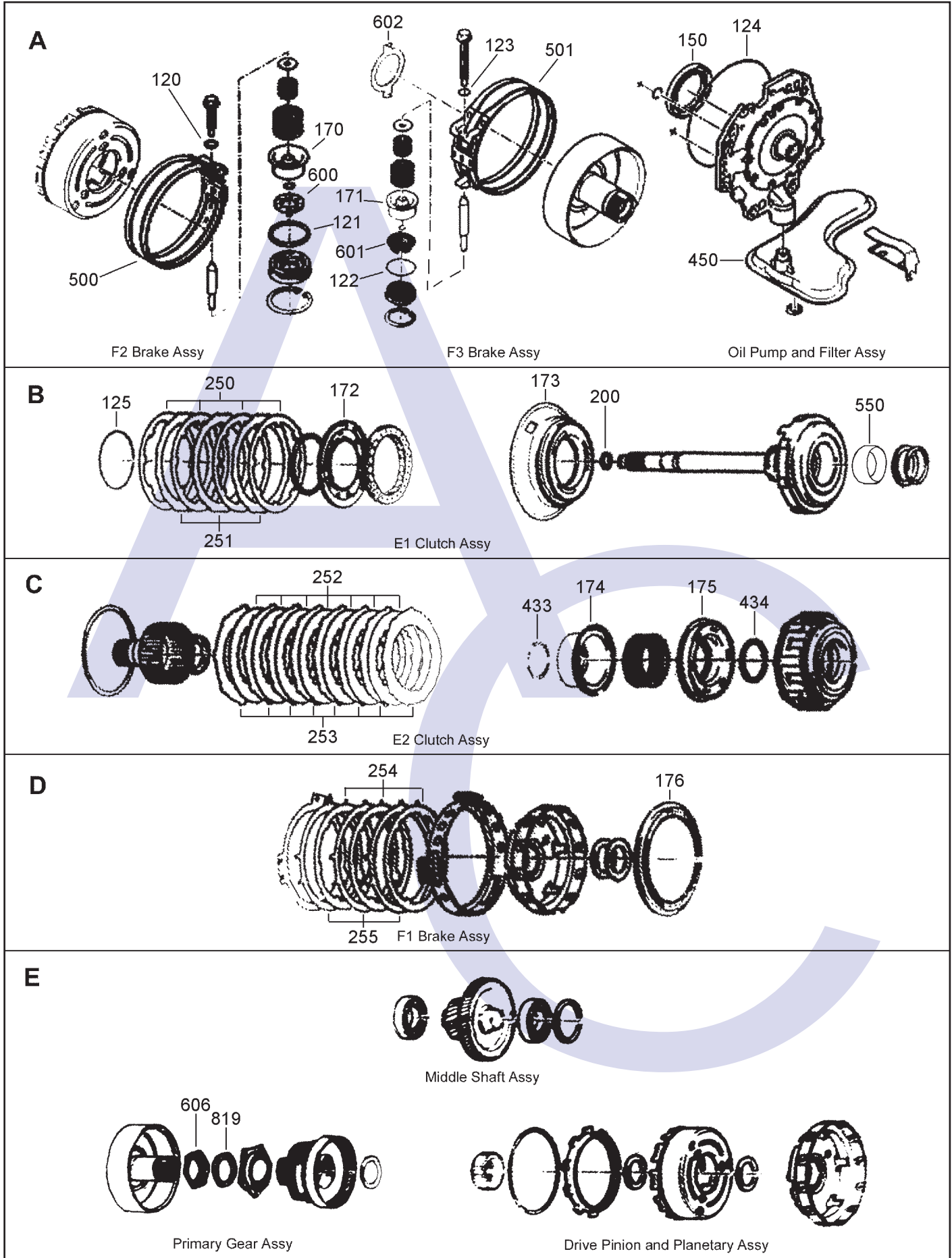
# RENAULT DPO, PEUGEOT CITROEN AL4 4 SPEED FWD (Electronic Control)



AUTOMATIC CHOICE



THE AUTOMATIC TRANSMISSION PARTS WAREHOUSE



# RENAULT DPO, PEUGEOT CITROEN AL4 4 SPEED FWD (Electronic Control)

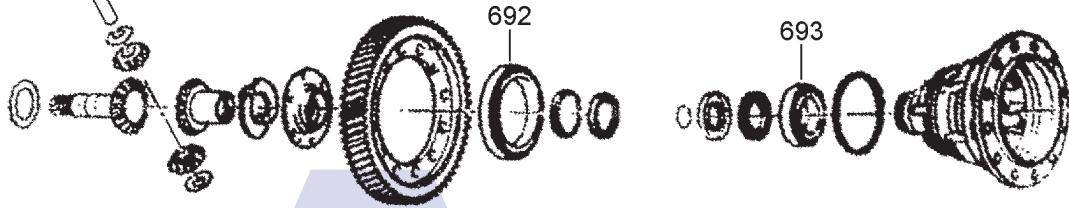


AUTOMATIC CHOICE



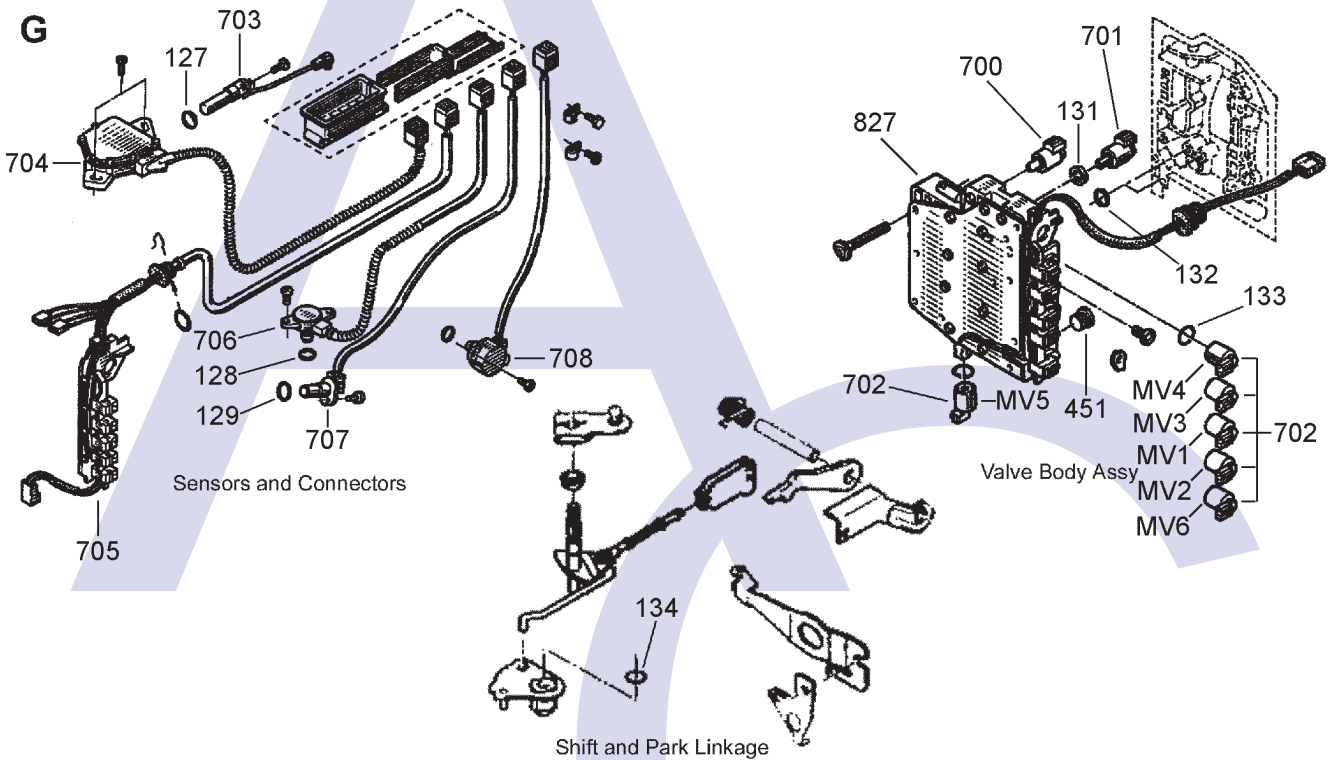
THE AUTOMATIC TRANSMISSION PARTS WAREHOUSE

F



Differential Assy

G

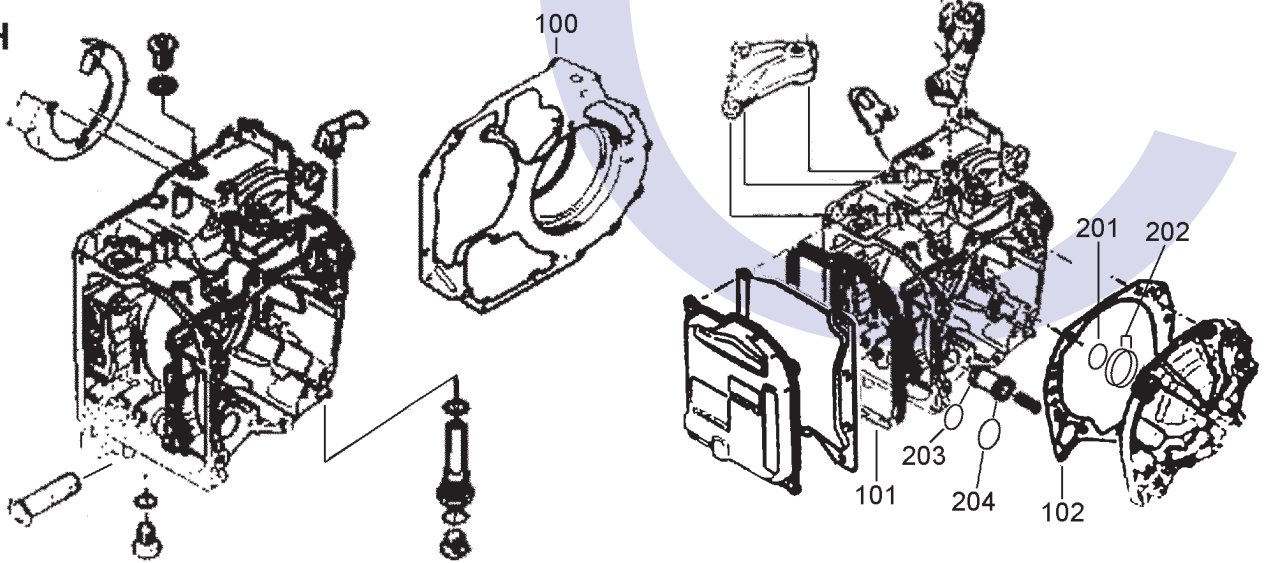


Sensors and Connectors

Valve Body Assy

Shift and Park Linkage

H



Transmission Casing

# RENAULT DPO, PEUGEOT CITROEN AL4 4 SPEED FWD (Electronic Control)



AUTOMATIC CHOICE



THE AUTOMATIC TRANSMISSION PARTS WAREHOUSE

ILL NO.	DESCRIPTION	YEARS	QTY	PART NO
<b>KITS</b>				
Kit	Gasket and Seal .....	All	1	DPO.GSK01
Kit	Overhaul Kit (EOM) Without Metal Gaskets.....	All	1	DPO.OHK01
Kit	Overhaul Kit (Transtec) Without Metal Gaskets.....	All	1	DPO.OHK04
Kit	Overhaul Kit (Aftermarket) With OEM Parts .....	All	1	DPO.OHK05
Kit	Overhaul Kit (Precision) Without Metal Gaskets.....	All	1	DPO.OHK51
Kit	Piston Kit.....	All	1	DPO.PISKIT
Kit	Copper Washer Kit.....	All	1	DPO.WK01
Kit	'O' Ring Kit.....	All	1	DPO.ORK01
<b>GASKETS</b>				
100H	Metal Case Gasket (Renault) (Use With DPO.GAS06) .....	All	1	DPO.GAS03
100H	Metal Case Gasket (Citroen) (Use With DPO.GAS06) .....	All	1	DPO.GAS05
100H	Late Case Gasket Bowl (Citroen) (Use With DPO.GAS03 & 05) ...	All	1	DPO.GAS06
101H	Valve Body Cover .....	All	1	DPO.GAS01
102H	Rear Cover (Steel & Rubber)....	All	1	DPO.GAS02
<b>RUBBER COMPONENTS</b>				
120A	Band Bolt 'O' Ring.....	All	2	DPO.OR04
121A	'F2' Servo 'O' Ring.....	All	1	DPO.OR09
122A	'F3' Servo 'O' Ring.....	All	1	DPO.OR10
124A	Pump 'O' Ring.....	All	1	DPO.OR01
NI	Pump Bolt 'O' Ring.....	All	10	DPO.OR02
125B	'E1' 'O' Ring .....	All	1	DPO.OR03
127G	Sensor 'O' Ring (Output Speed Sensor).....	All	1	DPO.OR06
128G	Sensor 'O' Ring (Oil Pressure Sensor) .....	All	1	DPO.OR07
129G	Sensor 'O' Ring (Input Speed Sensor).....	All	1	DPO.OR08
131G	EPC Solenoid Seal .....	All	2	DPO.SQR04
132G	Valve Body to Case Seal .....	All	2	DPO.SQR03
133G	Shift Solenoid 'O' Ring .....	All	6	DPO.OR11
134G	Detent Selector 'O' Ring .....	All	1	DPO.OR05
NI	Speedo 'O' Ring.....	All	1	DPO.OR12
NI	Solenoid Loom 'O' Ring .....	All	1	DPO.OR13
NI	Heat Exchanger Seal (Outer) ...	All	1	DPO.SQR01
NI	Heat Exchanger Seal (Inner) ....	All	1	DPO.SQR02
<b>METAL CLAD SEALS</b>				
150A	Converter Seal.....	All	1	DPO.MCS01
NI	Driveshaft (Left Hand).....	All	1	DPO.MCS02
NI	Driveshaft (Right Hand) .....	All	1	DPO.MCS03
NI	Selector Shaft .....	All	1	DPO.MCS04
<b>MOULDED PISTONS</b>				
Kit	Piston Kit (Less Servo Pistons) All		1	DPO.PISKIT
Kit	Piston Kit (With Servo Pistons). All		1	DPO.PISKIT01
170A	'F2' Servo Piston (65.00 x 24.40mm).....	All	1	DPO.SER02
171A	'F3' Servo Piston (46.00 x 23.50 x 8.00mm).....	All	1	DPO.SER03
172B	'E1' Accumulator Piston .....	All	1	DPO.PIS04
173B	'E1' Moulded Piston .....	All	1	DPO.PIS02
174C	'E2' Accumulator Piston .....	All	1	DPO.PIS03
175C	'E2' Moulded Piston .....	All	1	DPO.PIS05
176D	'F1' Moulded Piston .....	All	1	DPO.PIS01

ILL NO.	DESCRIPTION	YEARS	QTY	PART NO
<b>SEALING RINGS</b>				
Kit	Shaft Sealing Ring Kit.....	All	1	DPO.SRK01
Kit	Shaft Sealing Ring Kit (OEM) ...	All	1	DPO.SRK02
200B	Input Shaft (18.00 x 1.80 x 1.75mm).....	All	1	DPO.SSR01
201H	Rear Cover (Inner) (32.50 x 28.50 x 2.00mm).....	All	1	DPO.SSR03
202H	Rear Cover (Outer) (Transtec) (54.00 x 50.00 x 2.00mm).....	All	2	DPO.SSR02
203H	Accumulator (Inner) (32.50 x 28.50 x 2.00mm).....	All	1	DPO.SSR03
204H	Accumulator (Outer) (25.00 x 21.00 x 2.00mm).....	All	1	DPO.SSR04
<b>FRICITION PLATES</b>				
Kit	Friction Kit.....	All	1	DPO.FRK01
Kit	Friction Kit (Alto) .....	All	1	DPO.FRK51
250B	'E1' 160 x 120 x 1.60mm (8 Internal Teeth).....	All	3	DPO.FRP01
250B	'E1' 160 x 120 x 1.60mm (8 Internal Teeth) (Allomatic).....	All	3	DPO.FRP11
251B	'E1' 165 x 133 x 1.60mm (12 External Teeth) .....	All	3	DPO.FRP02
251B	'E1' 165 x 133 x 1.60mm (12 External Teeth) (Allomatic) .	All	3	DPO.FRP12
251B	'E1' 165 x 133 x 1.60mm (Early 12 External 15.7mm Teeth)		3	DPO.FRP07
252C	'E2' 118 x 78 x 1.60mm (20 Internal Teeth).....	All	7	DPO.FRP03
252C	'E2' 118 x 78 x 1.60mm (20 Internal Teeth) (Allomatic)...	All	7	DPO.FRP13
253C	'E2' 124 x 82 x 1.60mm (8 External Teeth) .....	All	7	DPO.FRP04
253C	'E2' 124 x 82 x 1.60mm (8 External Teeth) (Allomatic) ...	All	7	DPO.FRP14
254D	'F1' 171 x 137 x 1.60mm (6 Internal Teeth).....	All	3	DPO.FRP05
254D	'F1' 171 x 137 x 1.60mm (6 Internal Teeth) (Allomatic).....	All	3	DPO.FRP15
255D	'F1' 199 x 146 x 1.60mm (6 External Teeth) .....	All	3	DPO.FRP06
255D	'F1' 199 x 146 x 1.60mm (6 External Teeth) (Allomatic) ...	All	3	DPO.FRP16
<b>PRESSURE PLATES</b>				
<b>SPRINGS &amp; CIRCLIPS</b>				
433C	'E2' Upper Circlip (47.00 x 40.00 x 1.50mm).....	All	1	DPO.CIR01
434C	'E2' Drum Retainer Circlip (46.00 x 47.00 x 2.00mm).....	All	1	DPO.CIR02
<b>FILTERS</b>				
450A	Pan Filter .....	All	1	DPO.FIL01
451G	Valve Body Filter.....	All	1	DPO.FIL02

# RENAULT DPO, PEUGEOT CITROEN AL4 4 SPEED FWD (Electronic Control)



AUTOMATIC CHOICE

ILL NO.	DESCRIPTION	YEARS	QTY	PART NO
<b>BANDS</b>				
500A	'F2' Band Reverse (OEM)..... All	All	1	DPO.BAN01
500A	'F2' Band Reverse (Aftermarket)..... All	All	1	DPO.BAN02
501A	'F3' Band Forward 1st & 2nd (OEM) ..... All	All	1	DPO.BAN01
501A	'F3' Band Forward 1st & 2nd (Aftermarket)..... All	All	1	DPO.BAN02
<b>BUSHINGS</b>				
550B	'E1' Clutch Drum Bushing ..... All	All	1	DPO.BUS02
NI	Pump Bush (Standard) ..... All	All	1	DPO.BUS01
NI	Pump Bush (Oversize)..... All	All	1	DPO.BUS03
NI	Bush, Pump Stator (Small) ..... All	All	1	DPO.BUS04
NI	Bush, Pump Stator (Large)..... All	All	1	DPO.BUS05
<b>THRUST WASHERS &amp; BEARINGS</b>				
Kit	Selective Thrust Kit ('F2'/'F3' Servo)..... All	All	1	DPO.TWK02
600A	'F2' Selective Thrust Kit ..... All	All	1	DPO.THW03
601A	'F3' Selective Thrust Kit ..... All	All	1	DPO.THW03
602A	Plastic Thrust Washer (2 Tang 63 x 48mm)..... All	All	1	DPO.THW02
606E	Hexagonal Nut Thrust..... All	All	1	DPO.THW01
692F	Diff Bearing L/H ..... All	All	1	DPO.BE02
693F	Diff Bearing R/H..... All	All	1	DPO.BE01
693F	Bearing-Diff R/H (Update) (41mm x 72mm x 15.50mm)..... All	All	1	DPO.BE03
<b>ELECTRICAL COMPONENTS</b>				
700G	EPC Solenoid ( <b>NLA See Note</b> ) -09/03	-09/03	1	DPO.SOL01
700G	EPC Solenoid ( <b>See Note</b> )..... 10/03-	10/03-	1	DPO.SOL03
701G	Lock Up Sol ( <b>NLA See Note</b> ) ... -09/03	-09/03	1	DPO.SOL01
701G	Lock Up Sol ( <b>See Note</b> )..... 10/03-	10/03-	1	DPO.SOL03
702G	Shift Solenoid..... All	All	6	DPO.SOL02
703G	Output Speed Sensor ..... All	All	1	DPO.ELE06
704G	Range Switch (Megane, Clio & Scenic) ..... All	All	1	DPO.ELE01
705G	Valve Body Loom (Megane, Clio & Scenic) ..... All	All	1	DPO.ELE02
706G	Pressure Sensor (Megane, Clio & Scenic) ..... All	All	1	DPO.ELE03
706G	Pressure Sensor (Citroen)..... All	All	1	DPO.ELE11
707G	Input Speed Sensor (Megane, Clio & Scenic) ..... All	All	1	DPO.ELE04
708G	Heat Exchanger Temp Sensor.. All	All	1	DPO.ELE05
708G	Heat Exchanger Temp Sensor (Late 2 Pin Connector that doesn't fit into Multi Case Connector) ..... All	All	1	DPO.ELE12

### Renault DPO, Peugeot & Citroen AL4 Pressure and Lock-Up Solenoids

The **DPO.SOL03** solenoid is the latest design type (Silver with black connector), this supersedes the earlier design **DPO.SOL01** with white connector which is no longer available. When replacing solenoids of the previous design, both the lock-up and the pressure regulating solenoid must be replaced together and vehicle returned to the dealer to have the ECU reprogrammed. This is necessary because the pulse width modulation frequency is different on the later design. Approximate dates of changeover to the new design are as follows: Megane 2, September 2003, Laguna Jan 2004 & all other models from March 2004, Peugeot & Citroen Models from September 2003.

ILL NO.	DESCRIPTION	YEARS	QTY	PART NO
<b>VALVE BODY PARTS</b>				
NI	Plastic Valve Body Plug Set..... All	All	1	DPO.VA01
<b>HARD PARTS</b>				
819E	Nut (Primary Gear Assy) (125.00 x 54.00 x 7.00mm)..... All	All	1	DPO.NUT01
827G	Valve Body Assy (Exchange) With Early Solenoids (Renault) <b>Can be fitted to Citroen/Peugeot if seperator plate is changed.....</b> All	All	1	DPO.VB01
827G	Valve Body Assy (Exchange) With Late Solenoids (Renault) <b>Can be fitted to Citroen/Peugeot if seperator plate is changed.....</b> All	All	1	DPO.VB02
<b>SPECIAL ITEMS</b>				
NI	Washer Cooler Bolt (Copper/Rubber)..... All	All	1	DPO.WA01
NI	Heat Exchanger (Megane).....		1	DPO.COOL01
NI	Heat Exchanger (9 Row, Largest Type) (Requires Longer Bolt DPO.COOL03) (Has Shaped Pipes to Coolant)		1	DPO.COOL02
NI	Heat Exchanger (9 Row, Largest Type) (Requires Longer Bolt DPO.COOL03) (Has Straight Pipes to Coolant)		1	DPO.COOL04
NI	Cooler Bolt, (9 Row Cooler)..... All	All	2	DPO.COOL03
NI	'F3' (Front) Band Anti Rattle Spring ( <a href="#">Click Here For Information</a> ) ..... All	All	1	DPO.SPR01
<b>TOOLS &amp; MANUALS</b>				
Kit	Special Tool Kit Complete..... All	All	1	DPO.TOOL07
NI	Selector Detent Setting Tool ..... All	All		DPO.TOOL01
NI	R/H Drive Shaft Seal Installer... All	All		DPO.TOOL02
NI	L/H Drive Shaft Seal Installer..... All	All		DPO.TOOL03
NI	Pump Seal Installer..... All	All		DPO.TOOL04
NI	Adapter Plate Centralising Tool All	All		DPO.TOOL05
NI	Stator Bush Remover Tool..... All	All		DPO.TOOL06



THE AUTOMATIC TRANSMISSION PARTS WAREHOUSE